

RapiGest SF Surfactant: An Enabling Tool for In-Solution Enzymatic Protein Digestions

Ying Qing Yu, Martin Gilar

日本ウォーターズ株式会社



Abstract

In this application note, we provide an overview of the physical and chemical characteristics of Waters' patented *RapiGest SF* and illustrate selected application areas. First introduced in 2002 as an enzyme-friendly surfactant to assist in-solution protein digestion, *RapiGest SF* is an innovative product created to improve protein solubility during sample preparation.

Introduction

In this application note, we provide an overview of the physical and chemical characteristics of Waters' patented *RapiGest SF* and illustrate selected application areas. First introduced in 2002 as an enzyme-friendly surfactant to assist in-solution protein digestion, *RapiGest SF* is an innovative product created to improve protein solubility during sample preparation.

The mechanism by which *RapiGest SF* improves the speed and completeness of digestion is illustrated in Figure 1. Mild protein denaturation opens protein structure and exposes the proteolytic sites to enzymatic cleavage. Enzymes are more resistant to denaturation than common proteins and remain active in *RapiGest SF* solutions. More complete denaturation of globular proteins can be accomplished by heating in a *RapiGest SF* solution at elevated temperatures prior to the addition of enzymes and incubating the sample with the enzyme at 37 °C.^{1,2}

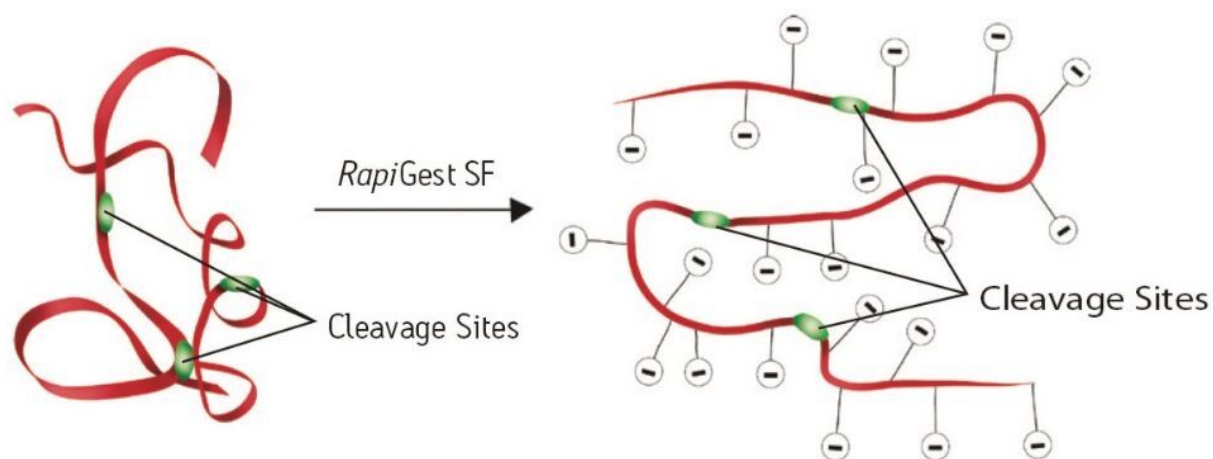


Figure 1. The protein substrate unfolds in *RapiGest SF* solution and becomes more amenable to proteolytic cleavage.

More than 200 peer-reviewed journals have cited the use of *RapiGest SF* for general sample solubilization purposes, mostly for proteomic applications. Recently, many pharmaceutical laboratories have adopted *RapiGest SF* for biotherapeutic protein characterization. Because of improved digestion and easy surfactant

removal prior to LC and MS analysis, *RapiGest* SF has become widely accepted for many applications, including high sequence coverage LC-UV/MS peptide mapping of therapeutic proteins.

Experimental

LC conditions

LC System:	Waters ACQUITY UPLC System
Column:	ACQUITY UPLC BEH 300 C ₁₈ , Peptide Separation Technology Column, 2.1 x 100mm
Column temp.:	40 °C
Sample injected:	2 µL (10 pmol)
Solvent A:	0.1% formic acid in water
Solvent B:	0.1% formic acid in acetonitrile
Flow rate:	200 µL/min
Gradient:	0 to 2 min: 2% B 2 to 92 min: 2 to 35% B 92 to 102 min: 35 to 50% B 102.1 to 105 min: 90% B 105.1 to 110 min: 2% B

MS conditions

MS System:	SYNAPT MS (V mode)
Capillary voltage:	3.2 kV

Source temp.:	120 °C
Desolvation temp.:	350 °C
Desolvation gas:	700 L/hr
MS scan rate:	1 sec/scan
Lock Mass channel:	100 fmol/μL Glu-Fib peptide (m/z 785.8426, $z = 2$), flow rate 20 μL/min

Results and Discussion

RapiGest SF is an acid labile surfactant that undergoes hydrolysis in acidic conditions.¹ This unique feature can be utilized to remove the surfactant from solutions when desired. The structure of *RapiGest SF* and its byproducts from the acid hydrolysis are shown in Figure 2. The acid labile property facilitates a nearly complete surfactant degradation of within about 45 minutes at pH 2.¹

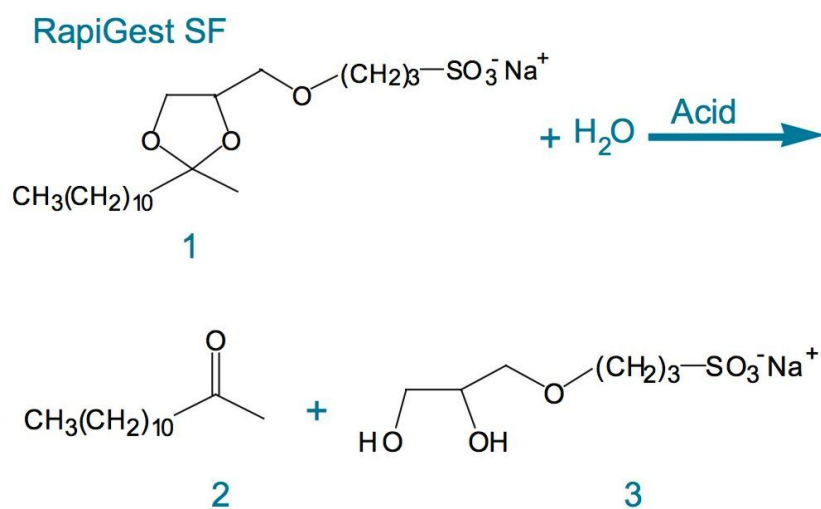


Figure 2. *RapiGest SF* (1) degrades in acidic solution to (2) and (3). The $t_{1/2}$ is 7.6 minutes at pH 2.

The surfactant decomposes into two products, dodeca-2-one and sodium-3-(2,3-dihydroxypropoxy) propanesulfonate. The first compound is water immiscible, and can be removed by centrifugation. The second degradant is highly soluble in aqueous solutions and practically unretained in reversed-phase LC mode. The aqueous fraction of enzymatic digest can be directly analyzed by HPLC, LC-MS, or by MALDI-TOF MS.

Removal after digestion

No additional detergent removal steps are required (e.g., dialysis) prior to sample analysis. The enzymatic digestions are typically acidified with acids such as formic acid, trifluoroacetic acid (TFA), or hydrochloric acid (HCl) to degrade *RapiGest* SF prior to further analysis. The recommended pH for degradation is ≤ 2 .

Compatibility with tryptic digestion

Trypsin is the most common proteolytic enzyme used for peptide mapping and proteomic applications. We have investigated trypsin activity in the presence of *RapiGest* SF and compared it to most common denaturants cited in literature. The assay was based on trypsin induced hydrolysis of N- α -benzoyl-L-arginine ethyl ester (BAEE) in 50 mM ammonium bicarbonate (pH 7.9) at room temperature. Changes in trypsin activity were calculated by measuring the rate of BAEE hydrolysis at UV 253 nm. Trypsin activity in the selected denaturant solution was compared against the control sample (no denaturant). The results are shown in Table 1.

Trypsin solution ^A	Trypsin activity ^B (%)	Trypsin solution ^A	Trypsin activity ^B (%)
No additive	100	50% Methanol	31
0.1% <i>RapiGest</i>	100	50% Acetonitrile	92
0.5% <i>RapiGest</i>	87	1 M Urea	97
0.1% SDS	20	2 M Urea	83
0.5 SDS	1	0.5 M Guanidine HCl	21
0.1 <i>RapiGest</i> /0.1% SDS	58	1 M Guanidine HCl	8

Table 1. Trypsin activity measured in the presence of selected denaturants.

A. 0.5 μ g of trypsin was added to 1 mL of 50 mM ammonium bicarbonate, pH 7.9, containing 0.2 mM of BAEE. B. Measured as delta BAEE absorbance at 253 nm (slope within 5 minutes).

The data in Table 1 suggest that at low concentrations (0.1%), *RapiGest* SF does not inhibit trypsin activity. This contrasts with structurally similar surfactant SDS, which appears to be a strong denaturant and inactivates the trypsin. Urea, acetonitrile, or guanidine-HCl were also proposed as denaturants for tryptic digestions. However, acetonitrile is a strong eluent and interferes with reversed-phase LC analysis of

digested sample. Urea is known to cause covalent modification of proteins, and Guanidine-HCl inactivates enzyme, similarly to SDS.

The implication from this experiment is that enzyme proteolysis activity can be affected by the denaturant used to solubilize the protein samples. Using *RapiGest* SF at low to high concentrations does not alter the enzyme activity; therefore, optimum proteolysis digestion is achieved without using an excess of enzyme.

Fast proteolytic digestions

Proteins that are resistant to proteolysis can be digested within minutes using *RapiGest* SF. A complete protein digestion for a globular protein, horse myoglobin, was achieved within 5 minutes. The comparison of results for surfactant-aided and control digestion is shown in Figure 3. Due to its globular nature, myoglobin is known to be difficult to digest without the use of any denaturant. In the control reaction, only a small fraction of protein is digested after 9 hours of incubation with trypsin. The overall digestion efficiency significantly improved when using *RapiGest* SF.

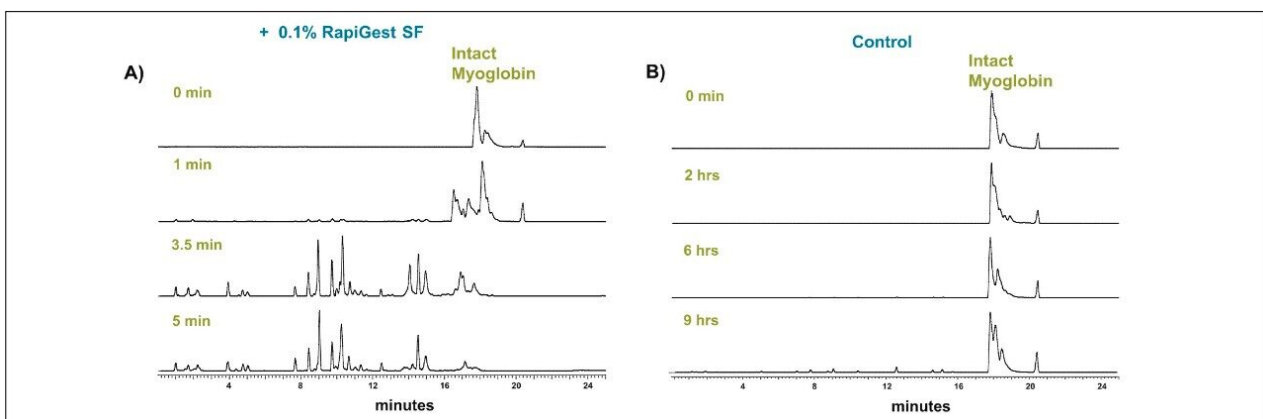


Figure 3. LC-MS total ion chromatograms of tryptic digest of horse myoglobin, (A) solubilized with 0.1% *RapiGest* SF, and (B) control digestion (no denaturant). Myoglobin digestion in 0.1% *RapiGest* SF solution provided complete tryptic digestion within 5 minutes, while control digestion remains incomplete even after 9 hours.

Improved sequence coverage in peptide mapping of therapeutic proteins

RapiGest SF has been widely used in proteomics sample preparation as an effective denaturant for protein solubilization. Recently, more biopharmaceutical labs have adopted *RapiGest* SF in their peptide mapping protocols. Several publications document the benefits of using *RapiGest* SF for therapeutic protein digestion.^{4,5} The reported *RapiGest* SF concentration used ranges from 0.05 to 1% depending on the protein hydrophobicity and concentration.

We have found that a 0.05 to 0.1% concentration of *RapiGest* SF is sufficient to denature various sizes of

proteins; higher concentration of *RapiGest* SF may be suited for a whole cell protein extraction type of experiment.

Peptide mapping of monoclonal antibodies (mAbs) is challenging due to the difficulty of digesting these large and hydrophobic proteins. The goal of peptide mapping analysis is to confirm the protein sequence and identify all present post-translational modifications (PTMs). Figure 4 shows an example of *RapiGest* SF-assisted digestion of humanized mAb. The parameters of sample preparation and analysis by UPLC and quadrupole time-of-flight MS are listed as guidelines.

The overall sequence coverage in the experiment shown in Figure 4 was 98%. Data analysis was performed with BiopharmaLynx Software, v.1.2. The high sequence coverage (98%) indicates a complete digestion of mAb. No intact protein or large miscleaved peptides were detected in LC-MS analysis. The remaining 2% of unaccounted sequence belong to a few two amino-acid-long peptides or to a single amino acid (R or K) that are unretainable on the reversed-phase column.

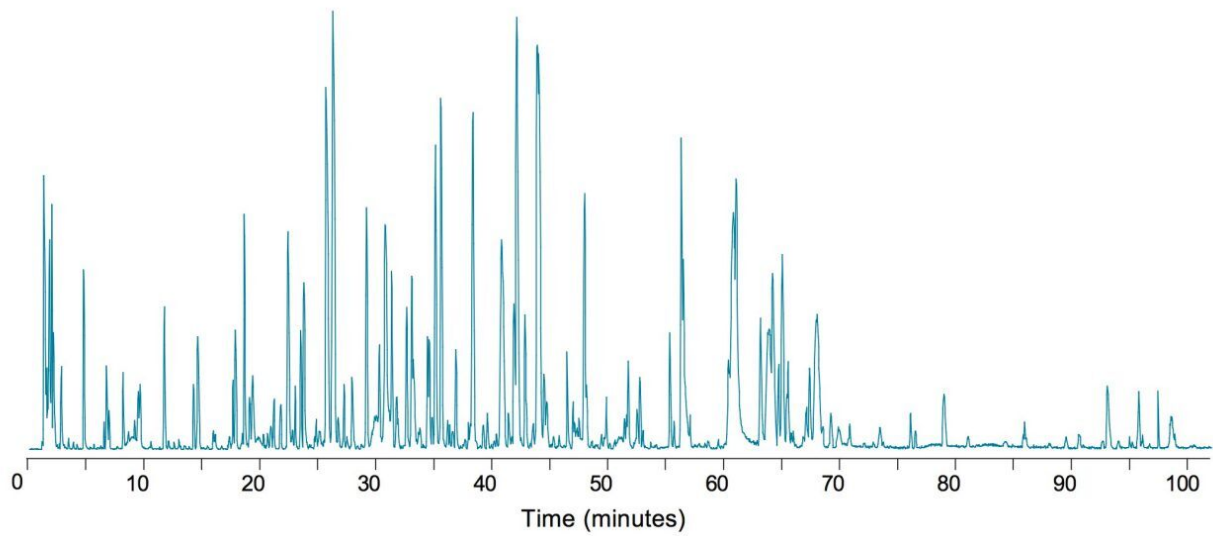
Sample preparation

Humanized mAb sample (10 μ L, 21 mg/mL) was solubilized in 50 μ L 50 mM ammonium bicarbonate containing 0.1% (w/v) *RapiGest* SF. 2 μ L of 0.1 M dithiothreitol (DTT) was added to the sample, and the sample was heated at 50 °C for 30 minutes. 4 μ L of 0.1 M iodoacetamide was added to the sample, after it was cooled to room temperature, and the sample was placed in the dark for 40 minutes.

8 μ g of trypsin was added to the sample (trypsin conc. = 1 μ g/ μ L) and the sample was incubated at 37 °C overnight. The digested sample was mixed with 1% formic acid in 10% acetonitrile (1:1, v:v). The sample was diluted to 5 pmol/ μ L with Milli-Q water (Millipore) prior to LC-MS analysis.

Humanized mAb IgG peptide map

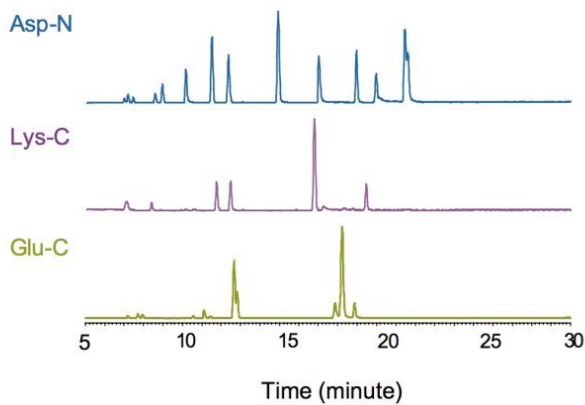
Protein sequence coverage = 98%



Use with additional proteolytic enzymes

We tested *RapiGest* SF compatibility with multiple proteolytic enzymes, for example, Asp-N, Lys-C, and Glu-C. Efficient digest results were obtained using *RapiGest* SF to denature the protein prior to proteolysis (Figure 5).

A) 0.1% (w/v) *RapiGest* SF



B) Control

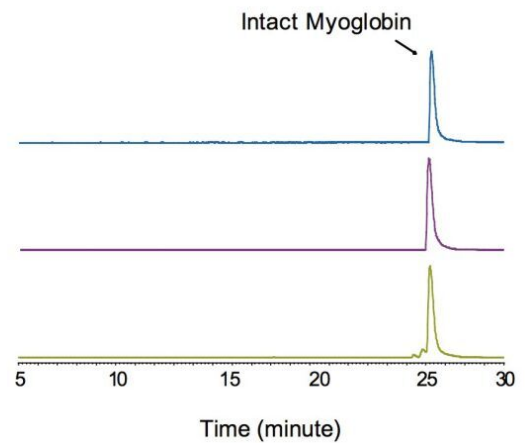
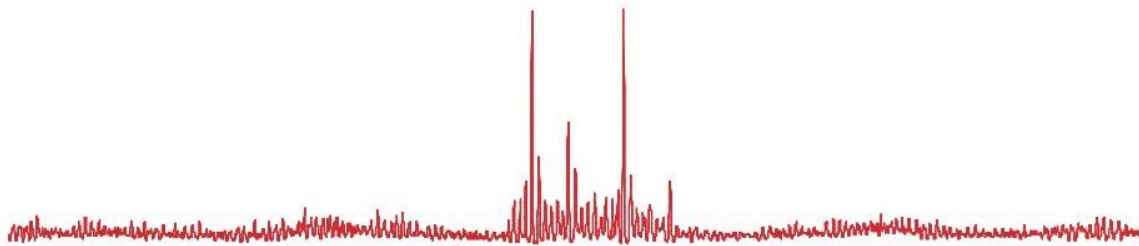


Figure 5. Horse myoglobin (50 pmol/ μ L) digestion with Asp-N, Lys-C, and Glu-C, with or without 0.1% (w/v) *RapiGest* SF. A. LC-MS analysis after 1 hour incubation at 37 °C with 0.1% *RapiGest* SF; no intact protein was left undigested. B. The control experiment (no surfactant) showed that majority of the myoglobin remains undigested.

Use for protein deglycosylation

RapiGest SF was also tested with other enzymes such as PNGase F, which is used to cleave N-linked glycans from glycoproteins.² Figure 6 illustrates the deglycosylation of chicken ovalbumin. Complete deglycosylation was observed after 2 hours in *RapiGest SF*-mediated digestion with PNGase F.

A) 2 hrs digestion without denaturation



B) 2 hrs digestion with 0.1% *RapiGest SF*

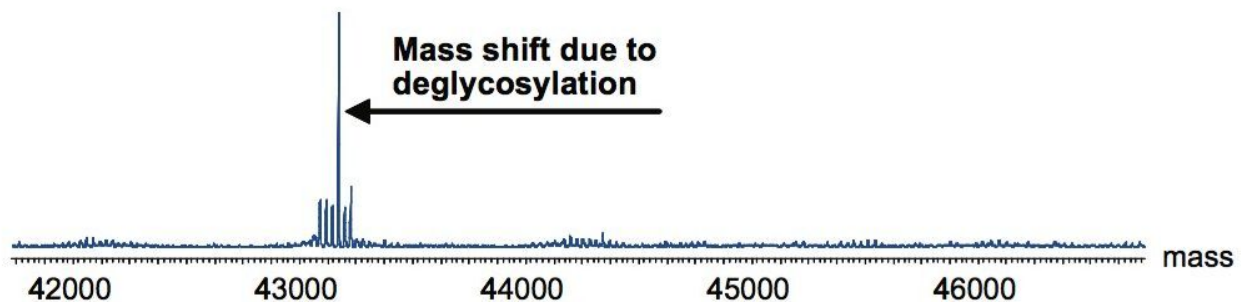


Figure 6. Chicken ovalbumin was deglycosylated with PNGase F without denaturation (A) and with 0.1% of *RapiGest SF* (B). The main signal in the deconvoluted LC-MS spectrum (B) represents ovalbumin without glycans (MW is consistent with amino acid composition). The heterogeneous MS signals in deconvoluted spectrum (A) indicates the presence of several glycoforms. The majority of glycans were not released from protein even after 2 hours of digestion. For details, see reference 3.

Conclusion

- *RapiGest SF* improves the speed and completeness of protein enzymatic digestions, enabling high-sequence-coverage peptide mapping of therapeutic proteins.
- *RapiGest SF* is a proven denaturant suitable for proteomic, glycomic, and biotherapeutic application areas.

- Minimal or no post-digestion sample preparation is required. Simple acidification of the sample is sufficient to remove *RapiGest* SF from solutions. In many cases, a simple dilution is acceptable prior to LC-MS analysis.
- *RapiGest* SF simplifies preparation protocols and improves throughput of analyses: its use improves laboratory productivity and overall data quality.

References

1. Yu YQ, Gilar M, Lee PJ, Bouvier ES, Gebler JC. Enzyme-friendly, mass spectrometry-compatible surfactant for in-solution enzymatic digestion of proteins. *Anal. Chem.* 2003; 75: 6023-6028.
2. Yu YQ, Gilar M, Lee PJ, Bouvier ES, Gebler JC, A complete peptide mapping of membrane proteins: a novel surfactant aiding the enzymatic digestion of bacteriorhodopsin. *Rapid Commun. Mass Spectrom.* 2004; 18: 711-715.
3. Yu YQ, Gilar M, Kaska J, Gebler JC. A rapid sample preparation method for mass spectrometry characterization of N-linked glycans. *Rapid Commun. Mass Spectrom.* 2005; 19: 2331-2336.
4. Bailey MJ, Hooker AD, Adams CS, Zhang S, James DC. A platform for high- throughput molecular characterization of recombinant monoclonal antibodies, *J. Chrom. B.* 2005; 826: 177-187.
5. Huang HZ, Nichols A, Liu DJ. Direct identification and quantification of aspartyl succinimide in an IgG2 mAb by *RapiGest* SF assisted digestion. *Anal. Chem.* 2009; 81 (4): 1686-1692.

Featured Products

ACQUITY UPLC System <<https://www.waters.com/514207>>

SYNAPT Mass Spectrometer <<https://www.waters.com/134740653>>

Available for purchase online:

ACQUITY UPLC Peptide BEH C18, 300Å, 1.7 µm, 2.1 mm X 100 mm Column <<https://www.waters.com/waters/partDetail.htm?partNumber=186003686>>

RapiGest SF <<https://www.waters.com/waters/partDetail.htm?partNumber=186008090>>

720003102, June 2009

©2019 Waters Corporation. All Rights Reserved.